

LEATHER

Beautiful and attractive appearance, perfect feel, gentle to the touch. The right choice for connoisseurs of good quality.

PIGMENTED LEATHER (Aries, Pegasus) is coated with a colour pigment on the surface before embossing the pattern, which gives the product a less natural look and covers most of the flaws. Therefore, the raw material itself can have more natural flaws than aniline leathers, for which the raw material is more carefully selected. However, through careful production and, selection of the raw material, it can retain its naturalness and be soft to the touch. This item is more durable in regular use.

ADVANTAGES :

- Uniform colour
- Highly resistant to light
- Good coverage of flaws
- Lower in price
- Easier for maintenance

Nubuck (Congo, Byron) and leathers Olly, Graffiti and Stain undergo a specific hand-treated process which reason these products are in great demand, although they have a number of flaws characterised by the leather as a natural material. The advantages and natural characteristics are similar to those of aniline leathers, although the raw material and the method of processing are different.

Aniline leather (Nappa Seta, Sauvage, Montreal) is a product that is very delicate and appreciated. The naturalness of this leather can be compared to a woollen sweater, which means that it is necessary to use it with care. Its added value lies in the fact that natural herbal tanning agents were used in the production process. Due to the very small amount of colour applied to the surface, the leather has a natural feel and softness and retains the natural properties of the leather - traces of scars from insect bites and scratches, slight cracks and stretch marks where the skin was more exposed to pressure confirm the naturalness of the material.



As a typical natural sign of the growth and development of the animal, it cannot be considered a defect, but proof of value, which makes each leather sofa unique.

ADVANTAGES :

- Naturalness
- Good and soft feel
- High quality of raw material, carefully selected

NATURAL CHARACTERISTICS :

- Natural flaws clearly visible
- Higher price
- Harder to maintain
- Lower resistance to light
- Non-uniform pattern

YOU CHOSE LEATHER AND THEREFORE A PART OF NATURE IN YOUR HOME !

Leather is a natural product, meaning certain properties are normal and cannot be the basis for returns.



Vein marks



Healed scars



Open scars



Insect bites



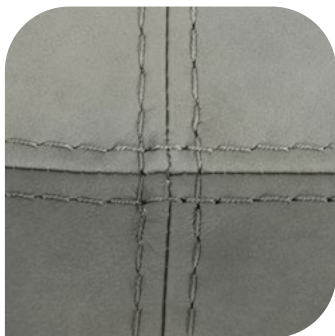
Wrinkles



Difference in structure



Branding marks



Razlika u boji

HOW TO CARE FOR YOUR LEATHER SOFA ?

GENERAL RECOMMENDATIONS :

- Avoid exposing the leather to direct sunlight and keep it away from heat sources. This includes avoiding drying the leather after cleaning, either in the sun or using a hair dryer.
- Wipe the dust regularly using a clean, dry and soft white cotton cloth
- Avoid wetting aniline and nubuck leathers, because, due to the natural properties of these leathers, traces of water may remain visible even after drying. If this happens, allow the skin to dry naturally.

STAIN REMOVAL :

- To remove dry stains, carefully remove them by hand or with an extremely soft brush
- To remove liquid stains, clean the surface carefully by dabbing with a paper towel. Do not apply too much pressure as this may push the stain into the pores of the skin, which will prevent it from being removed later.
- Clean with light circular motions starting from the outer edges of the stain inwards. RUBBING IS NOT RECOMMENDED

- Use a slightly damp cotton cloth or cotton wool for cleaning. THE USE OF MICROFIBRE CLOTHS IS STRICTLY PROHIBITED
- Dried stains can be cleaned with a cloth dampened in water with a few drops of milk, and after cleaning, lightly dry the wet part by dabbing with a flannel cloth.
- Do not clean hard stains with soluble agents that can damage the leather. Over time, small stains will even out.
- Never use aggressive cleaning agents, turpentine, shoe polish or steam to remove stains. Only mild products can be used such as neutral soap or certain cleansing milks.
- It is recommended to use products that are certified for cleaning leather. In our salons you can find cleaning products from Italian manufacturers under their or our cleaning brand according to leather type. Please strictly adhere to the enclosed instructions for use when using the products

LEATHER PROTECTION AND STRENGTHENING :

- In order for your leather furniture to last as long as possible, it should be refreshed and protected with adequate products every 10-12 weeks. Caring for leather is necessary in order to restore oils lost over time through use or cleaning.
- It is recommended to use products that are certified for the care and protection of leather. In our salons you can find care and protection products from Italian manufacturers under their or our brand according to leather type. Please strictly adhere to the enclosed instructions for use when using the products
- In addition to certified products, pigmented leather can be coated with a damp cloth with a few drops of milk after one year of use, while the same is not recommended for aniline and nubuck leather. That is why certified products are the best choice.